



Newsletter | October 2020 | Edition 3

100% Community Survey Results

Who has access to vital family services in Doña Ana County?

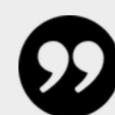
The 100% Community Survey was distributed in Doña Ana County in the late summer and fall of 2019. The survey was initiated by the Doña Ana County Resilience Leaders, a coalition focused on ending the epidemic of adverse childhood experiences (ACEs), trauma, and social adversity. The coalition follows the 100% Community framework provided by the Anna, Age Eight Institute who groups "vital family services" into two categories: surviving and thriving. The purpose of the survey was to establish a baseline on the level of need and access to these services.

What are surviving and thriving services?

- Surviving services fulfill our basic human needs; safe housing, food, medical care, behavioral health care, and transportation to services.
- Thriving services are those that research shows contribute to resilient and thriving communities; access to parental supports, early childhood education, youth mentors, community schools, and job training.

[See the full report here.](#)

Surviving Services



"We have health insurance, but our copays are crazy expensive. It stops us from going to the doctor or taking our kids to the emergency room."
-Survey Participant

Photo by CDC via Unsplash

Medical Care

- 89% of participants reported needing medical care services.
- 38% reported difficulty getting those services.
- Top difficulties included: long waitlists, cost, and inability to find a quality provider.

Mental and Behavioral Health Services

- 35% of participants reported needing mental and behavioral health services.
- 49% reported difficulty getting those services.
- Less than half (47%) that accessed these services ranked them as "good" or "very good."

Food Assistance Services

- 53% of participants reported needing food assistance services.
- 76% of single-parent households and 64% of respondents speaking a language other than English reported needing these services.

Housing Services

- Of those who reported needing housing services, 68% reported difficulty getting them.
- 33% of single-parent households and 27% of those with annual income below \$25k reported needing affordable housing services.

Thriving Services



"I think that the system kicks people off of services far too quickly and promotes a culture of not wanting to better yourself employment wise in order to keep needed services...."
-Survey Participant

Photo by Gabe Pierce via Unsplash

Child Care Services

- Of the 47% of families needing child care services, 76% reported that it "costs too much."
- Moreover, comments from respondents pointed to the impact of the "cliff-effect," when slight changes in income push families off subsidized support programs such as food assistance or subsidized child care.

Preschool Services

- Among the 20% of respondents who reported difficulty obtaining preschool services, the top barriers included long waitlists, high costs, and difficulties finding quality providers.
- Comments pointed to issues obtaining services for children with special needs and not qualifying for free programs.

School-based Mental Health Services

- 67% of respondents who needed school-based mental health services for their child said there weren't enough mental health care professionals at their child's school, and nearly half (48%) said the school did not offer the types of services their child needed.

Job Training Services

- 42% of participants reported difficulty getting job training services
- 18% of individuals living in a Colonia reported needing job training services
- Nearly 1 out of every 4 parents (24%) who had difficulty accessing job training services reported, "I don't have anyone to watch my child during training."

Family Support

Many people look to extended family members to help where they can. Parents can find ease in knowing that they have family members and friends to assist them and their children when needed. However, not all families have this outside support.

- 59% of participants reported that they agreed or strongly agreed with the statement "I have extended family support living near me that I can depend on."
- Respondents reporting the highest level of family support were those living in Hatch Valley School District, while those feeling the lowest level of support were non-Hispanics.

[See the full report here.](#)

Final Thoughts

The Doña Ana County Resilience Leaders are working to ensure that families and community members have access to ten vital services. Their action teams work with local leaders and service providers to strengthen the services we all need to be healthy and safe. You can join the **Doña Ana County Resilience Leaders** coalition by contacting [Las Cruces City Councilor Kasandra Gandara](#). To learn more about the **Anna, Age Eight Institute**, visit their [website](#).

To view in-depth data on all 10 of the surviving and thriving services, visit our [full report](#).

To view prior newsletters, reports, snapshots, and dashboards from the **Center for Community Analysis**, visit our [website](#).