

Early Childhood Education Partnerships in Doña Ana County:

Depths of Relationships Survey, 2020



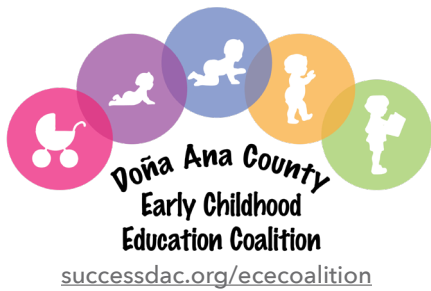
51*

local organizations participated in

282*

partnerships to strengthen early childhood education in Doña Ana County in 2020.

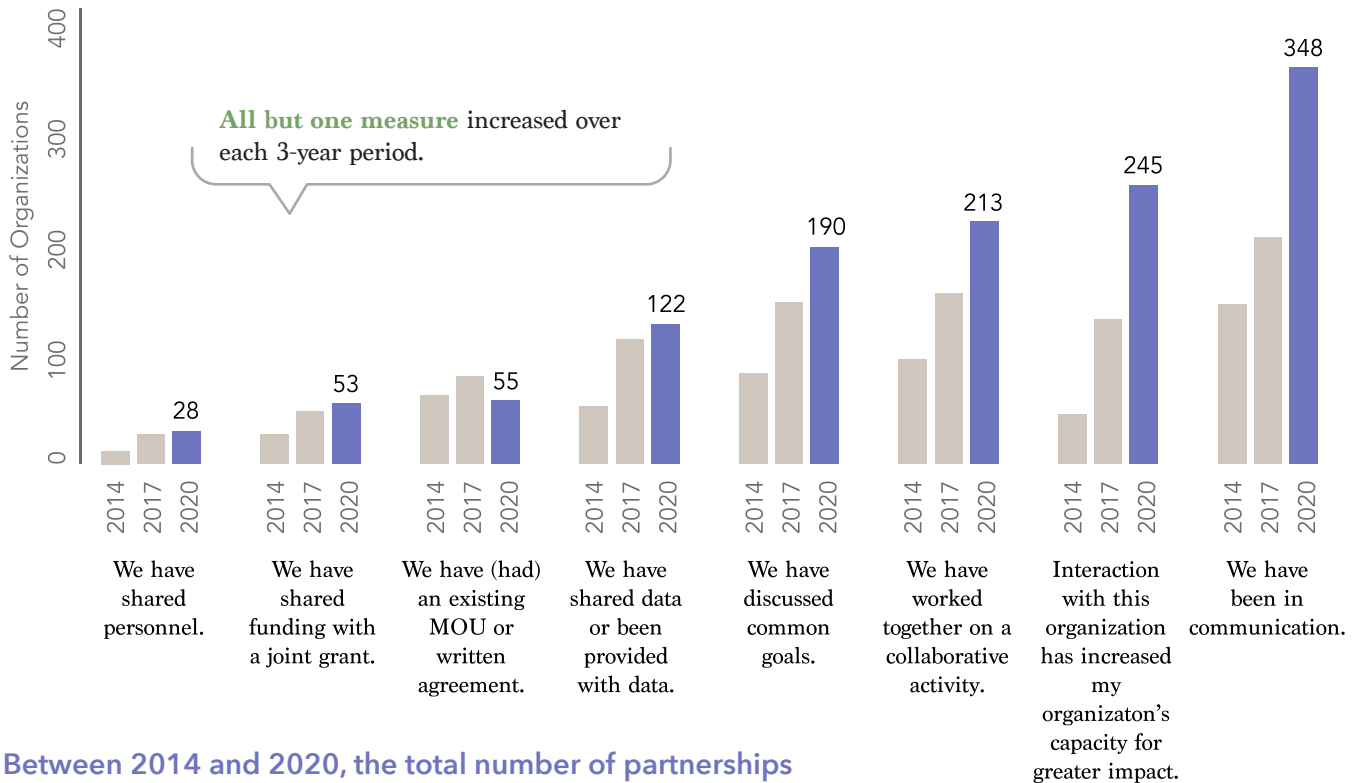
*Note: Out of 51 organizations invited, 21 (41%) completed the Depths of Relationships survey. The total number of partnerships amounts to 282 when subdivisions of the same organization are grouped (such as Tresco TOTS Early Intervention and Tresco Day One Home Visiting). Before grouping, the total is 349.



2020 Depths of Relationships Survey:

In 2020, the Doña Ana County Early Childhood Education Coalition partnered with the NMSU Center for Community Analysis to measure growth in collaborations and partnerships across local organizations that support or directly provide early childhood education (ECE) in Doña Ana County. Comparing the types and counts of partnerships and collaborations in 2020 to data from 2014 and 2017 reveals huge progress.

Types of Collaborations Reported by Partners in 2020:



Between 2014 and 2020, the total number of partnerships increased by **159%**:



2014

Organizations self-reported **10.2 partners on average** in 2014, and a maximum of **20 partners**.



2017



2020

Organizations self-reported **18.7 partners on average** in 2020, and some organizations reported as many as **46 partners**.



For more information, see the full interactive data dashboard at <https://cca.nmsu.edu/dashboards-list/depths-ece.html>



BE BOLD. Shape the Future.
Center for Community Analysis
<https://cca.nmsu.edu>